

**BHARAT FORGE
GLOBAL HOLDING**



CORPORATE SOCIAL RESPONSIBILITY (CSR)

Nachhaltigkeit ist seit jeher ein Grundprinzip des Handelns der Bharat Forge Global Holding GmbH. Es ist als Unternehmensziel verankert. Der Umweltschutz ist im Leitbild genannt, wie auch der Fokus auf langfristigen wirtschaftlichen Erfolg in Verbindung mit einer menschlichen Leistungskultur und hoher gesellschaftlicher Verantwortung. Eine nachhaltige Unternehmensführung liegt uns daher besonders am Herzen. Mit diesem Report möchten wir über die verschiedenen Facetten der Nachhaltigkeitsaktivitäten informieren.

Sustainability has always been a fundamental principle of business actions for Bharat Forge Global Holding. It is a business objective. Environmental protection is mentioned in our companies' mission statement, as well as the focus on long-term economical success, not least because of sustainable human resource management. A sustainable management of the group is especially important to us. With this report we would like to present the different facets of our sustainability efforts.

Nachhaltigkeit setzt sich aus drei wesentlichen Gesichtspunkten zusammen:

- Ökonomische Dimension
- Ökologische Dimension
- Gesellschaftliche Dimension

→ Alle drei Dimensionen sind gleichwertig

→ Nachhaltigkeit ist mehr als nur Umwelt

Sustainability is composed of three aspects:

- Economic dimension
- Ecologic dimension
- Social dimension

→ All three dimensions are of equal rank

→ Sustainability is more than environment

Unter dem Dach der Bharat Forge Global Holding GmbH sind als operative Unternehmenseinheiten die Bharat Forge CDP GmbH im Verbund mit der Bharat Forge Daun GmbH, die Bharat Forge Aluminiumtechnik GmbH sowie die Bharat Forge Kilsta AB (Schweden) und Mécanique Générale Langroise (France) vereint.

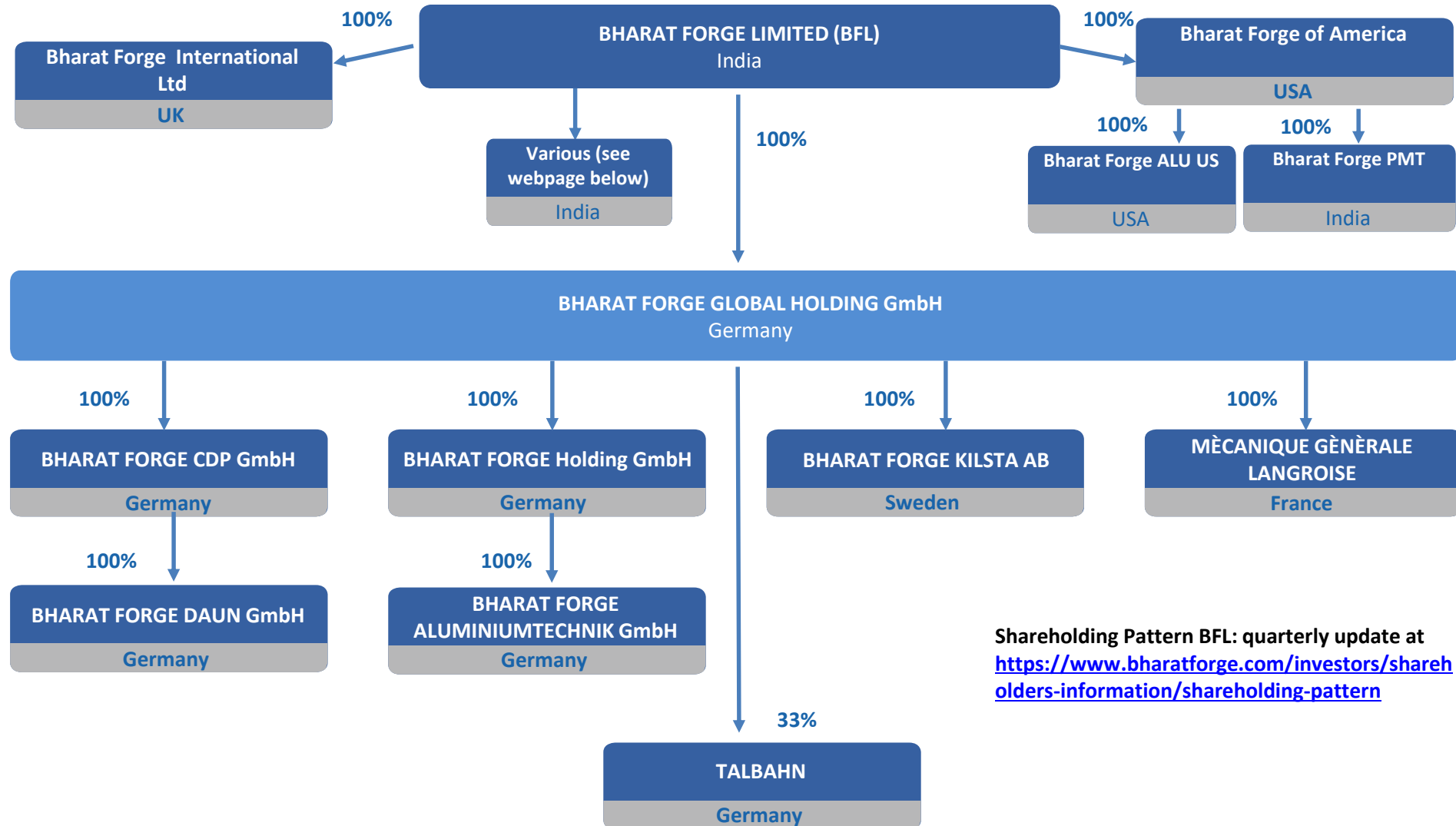
Under the umbrella of Bharat Forge Global Holding GmbH, the operating companies are Bharat Forge CDP GmbH in conjunction with Bharat Forge Daun GmbH, Bharat Forge Aluminumtechnik GmbH, Bharat Forge Kilsta AB (Sweden) and Mécanique Générale Langroise (France).

Die Bharat Forge Global Holding gehört zur Bharat Forge Limited, einer der führenden Schmiedegruppen der Welt. Die BFGH Gesellschaften beschäftigen sich mit der Konstruktion, Produktion und Lieferung von Aluminium- und Stahl-Schmiedeteilen für internationale Kunden. Sie bieten geschmiedete Stahlprodukte für LKW und PKW-Chassis, Antriebsstränge, Bahntechnik und Nicht-Automobil- / Maschinenteile; sowie Aluminium-Schmiede-Lösungen für PKW Chassis. Die Unternehmen bieten auch Werkzeuge, Matrizen und Vorrichtungen für die Herstellung entsprechender Produkte an.

Bharat Forge Global Holding belongs to Bharat Forge Limited, one of the leading forging groups in the world. BFGH companies are engaged in the design, production, and supply of aluminum and steel forged components for international customers. It offers products, including truck-, PassCar -chassis, powertrains, railway technology, and non-automotive/machinery parts; and aluminum forging solutions for PassCar Chassis such as control arms, knuckles. The company also provides tools, dies, and fixtures for relevant products.

Bharat Forge Group Legal Group Structure

**BHARAT FORGE
GLOBAL HOLDING**



Shareholding Pattern BFL: quarterly update at <https://www.bharatforge.com/investors/shareholders-information/shareholding-pattern>



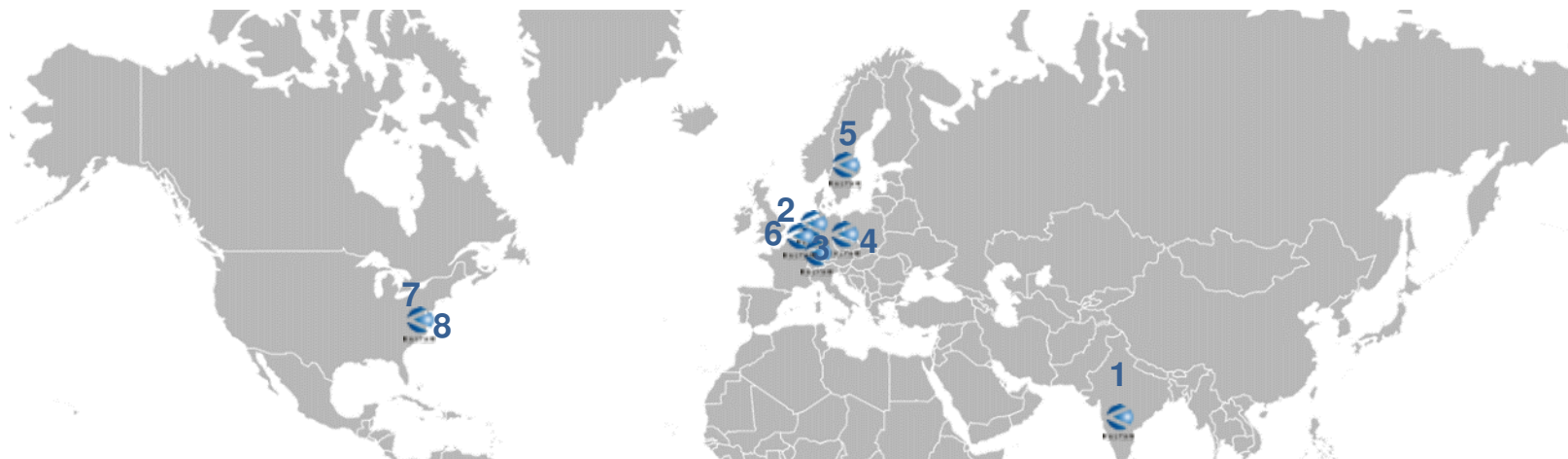
Bharat Forge Group

1	Bharat Forge Limited	BFL	Pune, India
2	Bharat Forge CDP	BF CDP	Ennepetal, Germany
3	Bharat Forge Daun	BF Daun	Daun, Germany
4	Bharat Forge Aluminiumtechnik	BF AT	Brand-Erbisdorf, Germany
5	Bharat Forge Kilsta	BFK	Karlskoga, Sweden
6	Mécanique Générale Langroise	MGL	Saints-Geosmes, France
7	Bharat Forge PMT	BF PMT	Surgoinsville, USA
8	Bharat Forge Aluminum USA, Inc.	BFALUUS	Sanford, USA

Bharat Forge

Production Facilities

**BHARAT FORGE
GLOBAL HOLDING**



Bharat Forge Global Holding Subgroup

2023	Bharat Forge Ltd. [1]	Bharat Forge CDP [2]	Bharat Forge Daun [3]	Bharat Forge Aluminium-technik [4]	Bharat Forge Kilsta [5]	Mécanique Générale Langroise [6]	Bharat Forge PMT Technologie [7]	Bharat Forge Aluminum USA, Inc [8]
Capacity [t]	406.150	95.000 Steel 6.000 Alu	Tools, Machining	45.000	80.000	Machining	40.000	10.000
Employees	~ 8500	~ 490	~ 110	~ 530	~ 320	~ 40	~ 160	~ 180
Turnover [Mio.€]	997	222	18	153	110	7	38	48
Locations	5	2	1	1	1	1	1	1

Press Lines

Bharat Forge Global Holding Subgroup

**BHARAT FORGE
GLOBAL HOLDING**



16.000



8.000-
12.500



2.500-
6.000



Others

Press size in tons

No. of Presses

Weight Range
in kg

3

6

16

Hammers (up to 80 mt)

Open Die Presses
(Max. Ingot 70 tons)

Ring Rolling (up to 4,5 m
dia)

75-200

30-100

2-50

Key Facts

Bharat Forge CDP

BHARAT FORGE
GLOBAL HOLDING



- Founded: 1839
- Turnover: 222 mn EUR
- Material cons.: 95.000 t (Steel) / 6.000 t (Aluminum)
- Weight range: 2 – 70 kg
- Employees: ~ 490
- Key Products: Truck Knuckles, Crankshafts, Pistons, Tips, Railway, Parts for Electric Cars/Hybrids

Key Facts

Bharat Forge Aluminiumtechnik

**BHARAT FORGE
GLOBAL HOLDING**



**Brand-Erbisdorf,
Germany**



- **Founded:** 1996
- **Turnover:** 153 mn EUR
- **Material cons.:** 45.000 t (Aluminium)
- **Weight range:** 2 – 7 kg
- **Employees:** ~ 530
- **Key Products:** Aluminum Chassis Parts for Passenger Cars & Motorcycles

Key Facts

Bharat Forge Daun

BHARAT FORGE
GLOBAL HOLDING



- Founded: 1972
- Turnover: 18 mn EUR
- Employees: ~ 110
- Key Products: Tools, Machining



Key Facts

Bharat Forge Kilsta

BHARAT FORGE
GLOBAL HOLDING



- **Founded:** 1646
- **Turnover:** 110 mn EUR
- **Material cons.:** 80,000 t (Steel)
- **Weight range:** 2 – 350 kg
- **Employees:** ~ 320
- **Key Products:** Front Axle & Pusher Beams, Crankshafts, Lever Arms

Key Facts

Mécanique Générale Langroise

BHARAT FORGE
GLOBAL HOLDING



Saints-Geosmes,
France



- Founded: 1991
- Turnover: 7 mn EUR
- Weight range: up to 18 t
- Employees: ~ 40
- Key Products: Machining (Oil & Gas, Drilling, Nuclear, Aerospace, Rail)

Key Facts

BF PMT

BHARAT FORGE
GLOBAL HOLDING



- Founded: 1996
- Turnover: 38 mn EUR
- Material cons.: 40.000 t (Steel)
- Weight range: 2 – 43 kg
- Employees: ~ 160
- Key Products: Pistons, Heavy Truck Knuckles, Wheel Carriers, Off Road Construction- and Agriculture Equipment, Yokes, Gears, Towing Hooks, Oil/Gas Drilling tools

Key Facts

BF ALU US

BHARAT FORGE
GLOBAL HOLDING

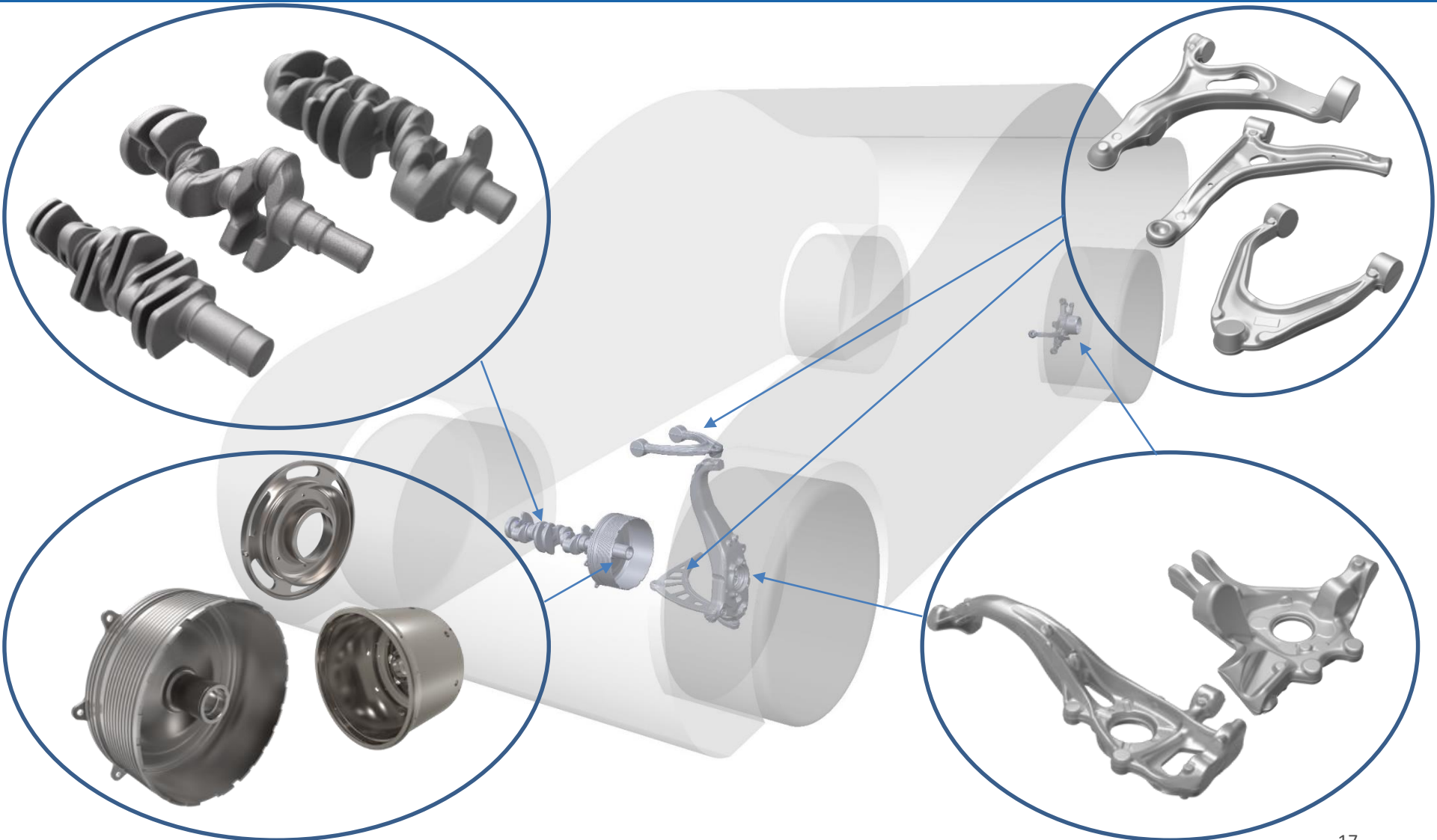


- **Founded:** 2020
- **Turnover:** 48 mn EUR
- **Material cons.:** 10.000 t
- **Weight range:** 2 – 11kg
- **Employees:** ~ 180
- **Key Products:** Aluminum Chassis Parts for Passenger Cars

Products

Passenger Car

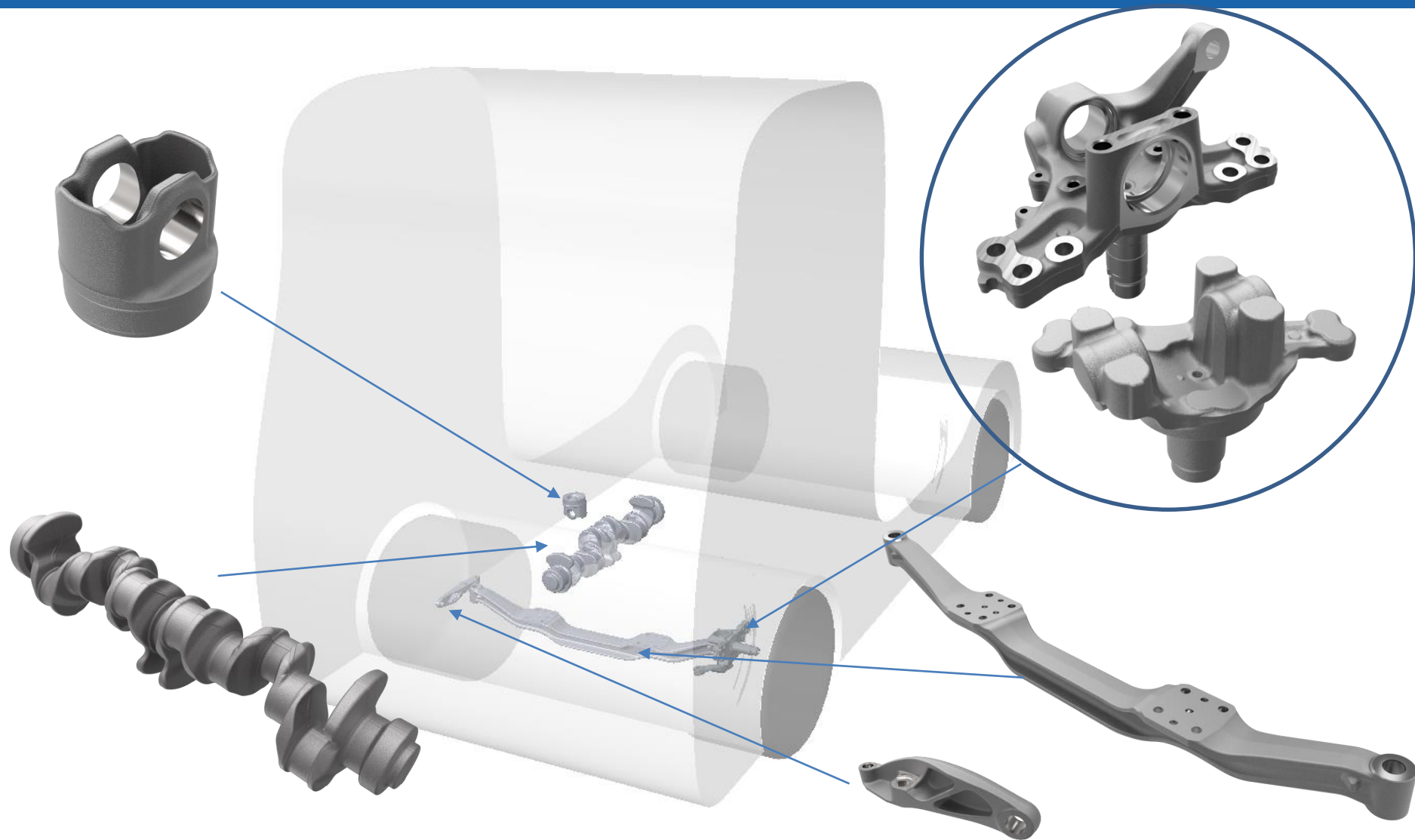
BHARAT FORGE
GLOBAL HOLDING



Products

Commercial Vehicle

BHARAT FORGE
GLOBAL HOLDING



Development Chain

Full Service

BHARAT FORGE
GLOBAL HOLDING



Specifications/ Loadcases



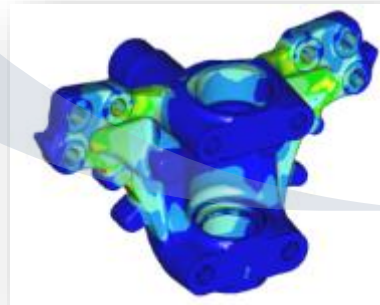
Evaluation / Testing



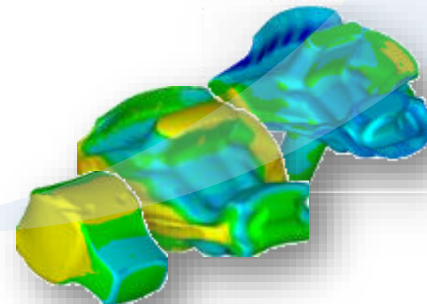
Product Development



Production



Product Optimisation



Process Development

Machining Capacity For Hybrid Components (BF Daun)

BHARAT FORGE
GLOBAL HOLDING

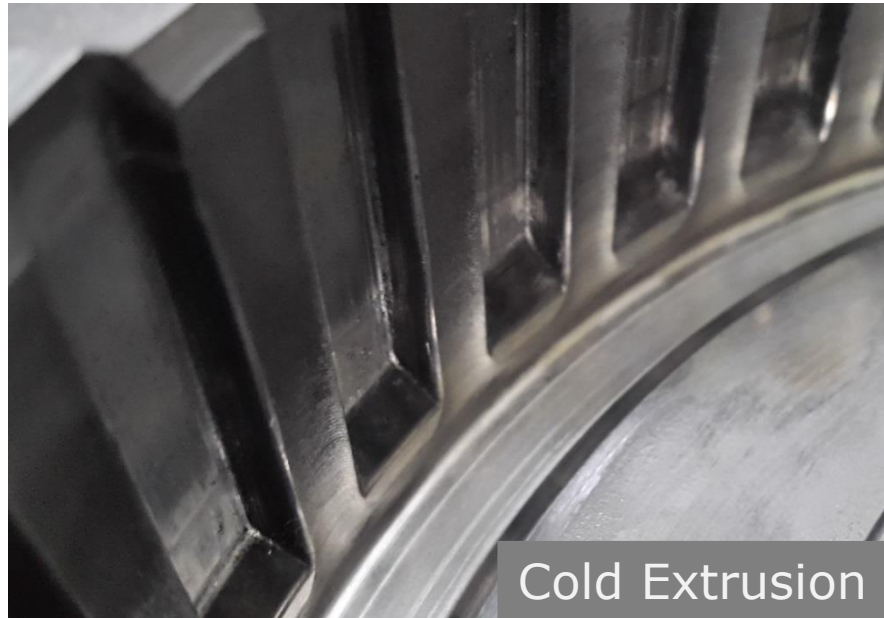


- BFGH delivers into zero emission passenger vehicles
- ... and works – in cooperation with universities – on new projects like light weight shafts for Electric Vehicles

■ Komplette Stadienfolge Rotorwelle BMW i3



Comparison Cold Forming vs. Flow Forming

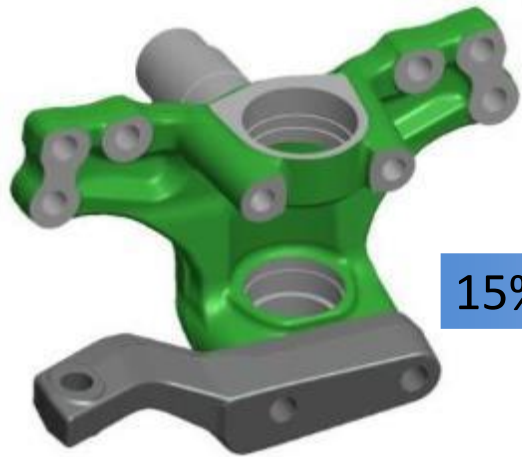


- BFGH develops resource efficient manufacturing processes by reduction of machining

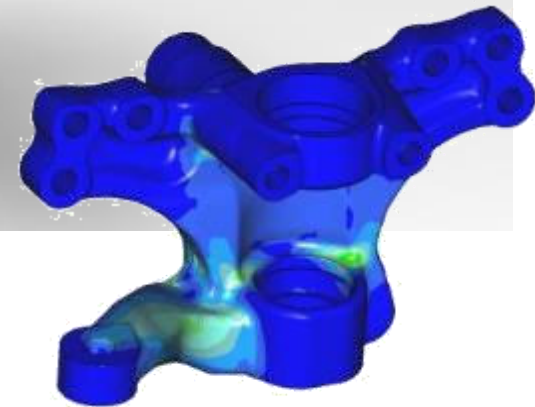
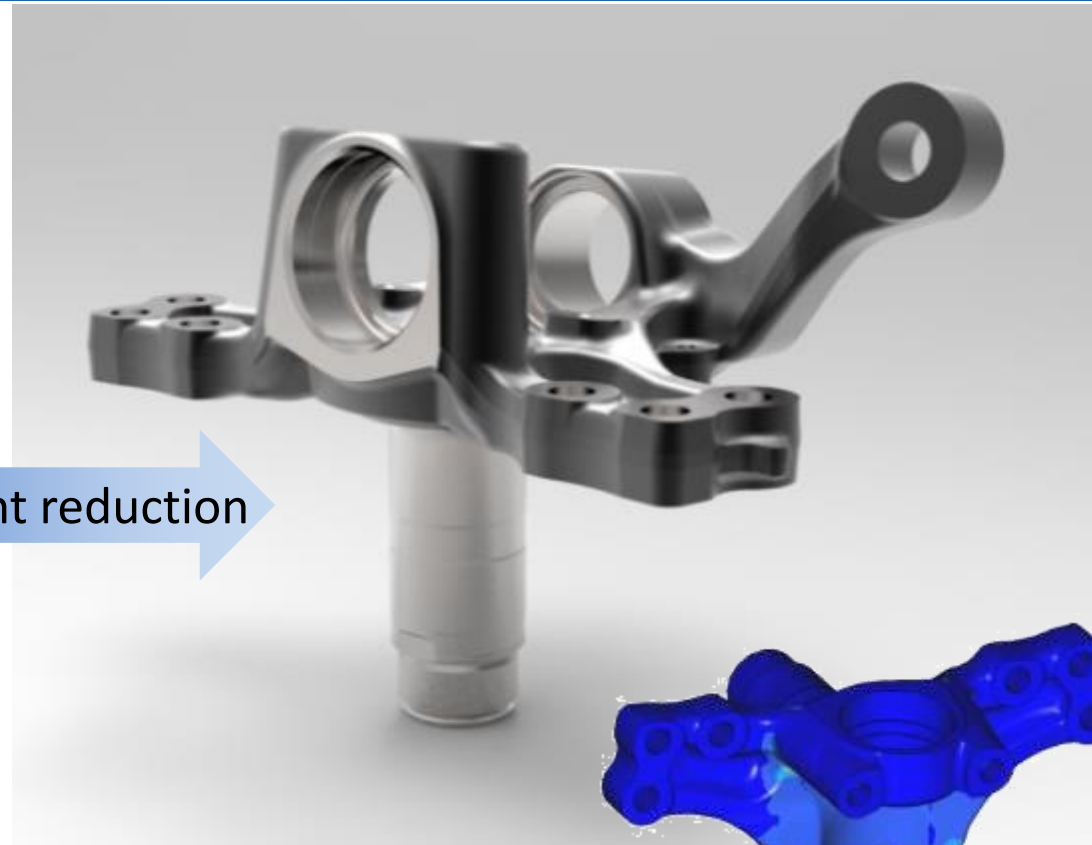


Products Optimization Integration of Tie Rod Arm

Weight reduction leads
to CO₂ reduction



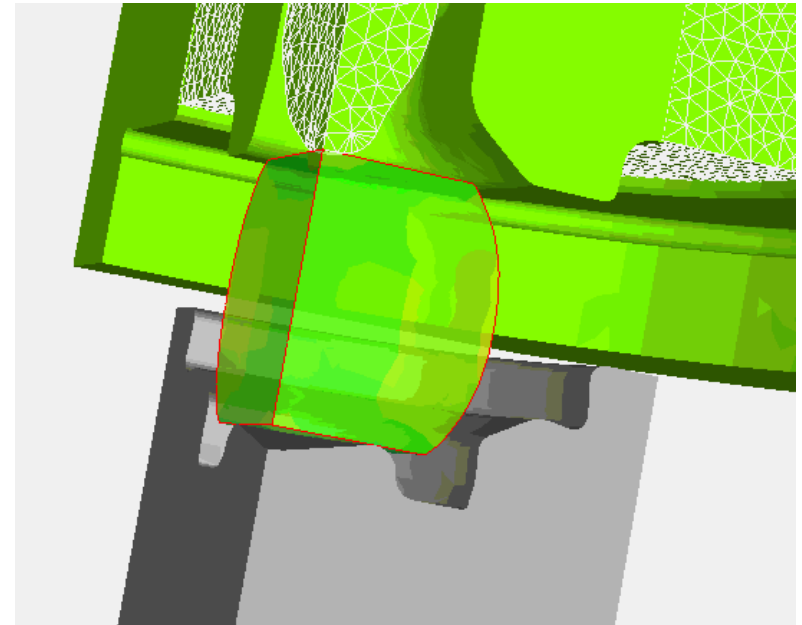
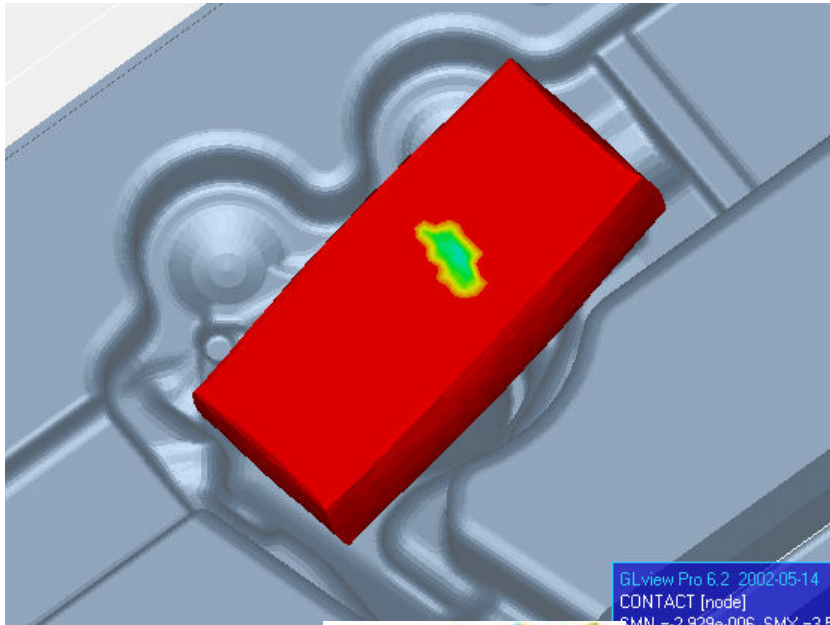
15% weight reduction



Forging Simulation Example

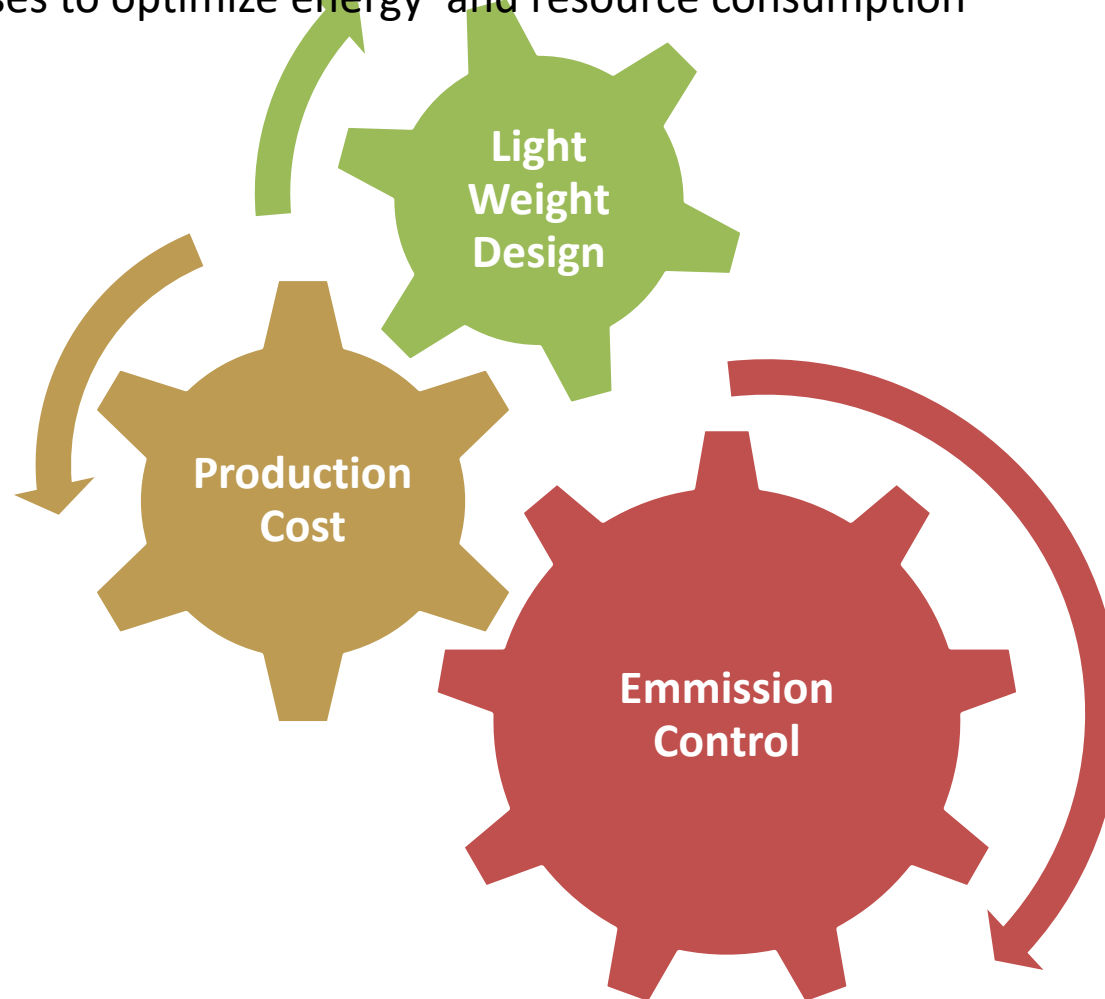
Forging Fold

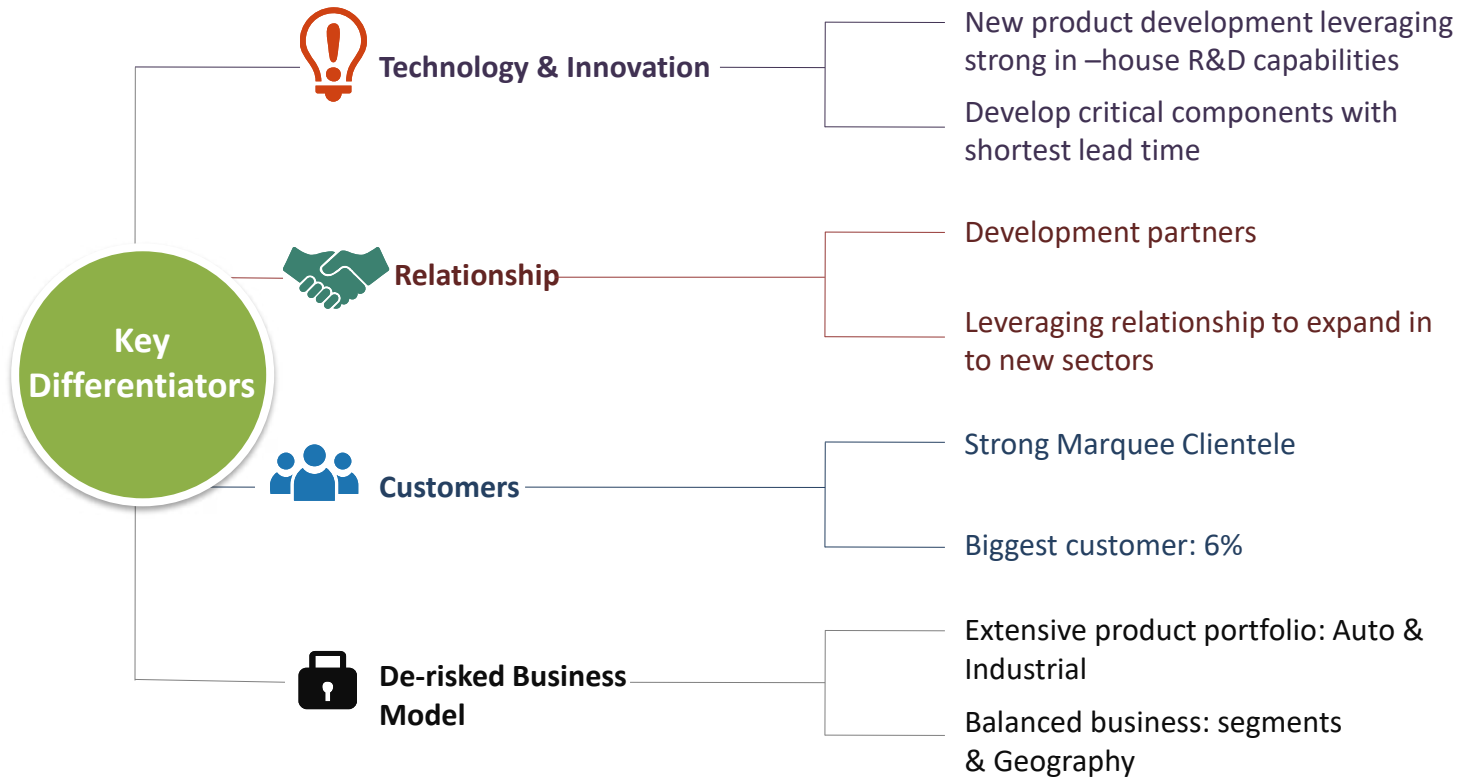
Simulations avoid energy and resource consumption



- FORGE3 Group License
- 128-Core-Clusters in India and Germany
- Many Multi-Core Installations

Coordinated processes to optimize energy and resource consumption



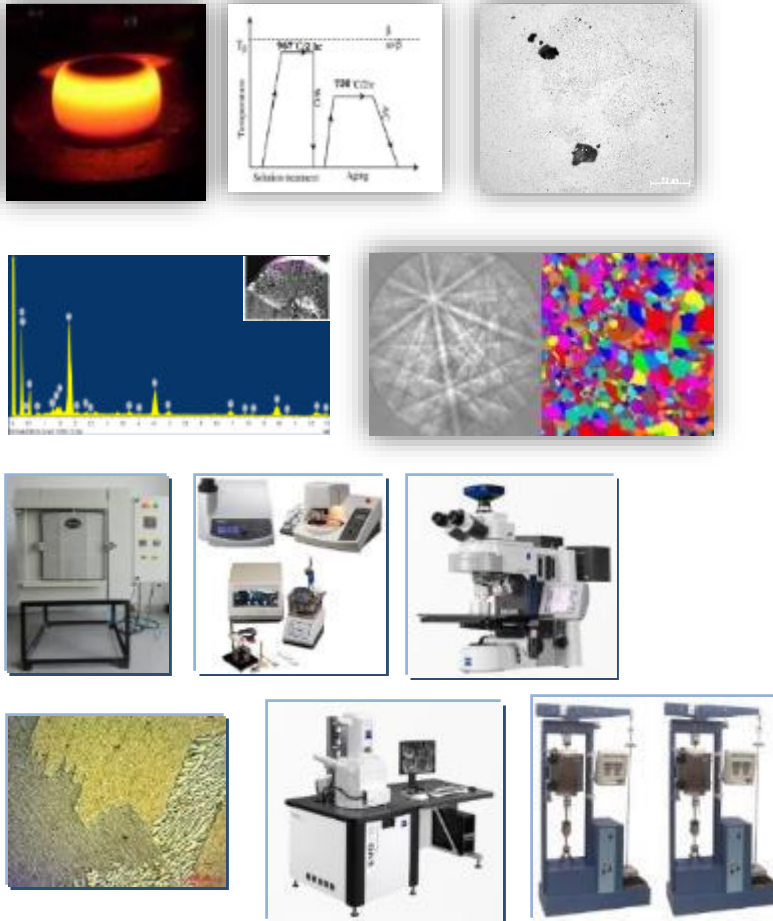


Kalyani Centre for Technology and Innovation (KCTI, Pune)

Training Capacity

BHARAT FORGE
GLOBAL HOLDING



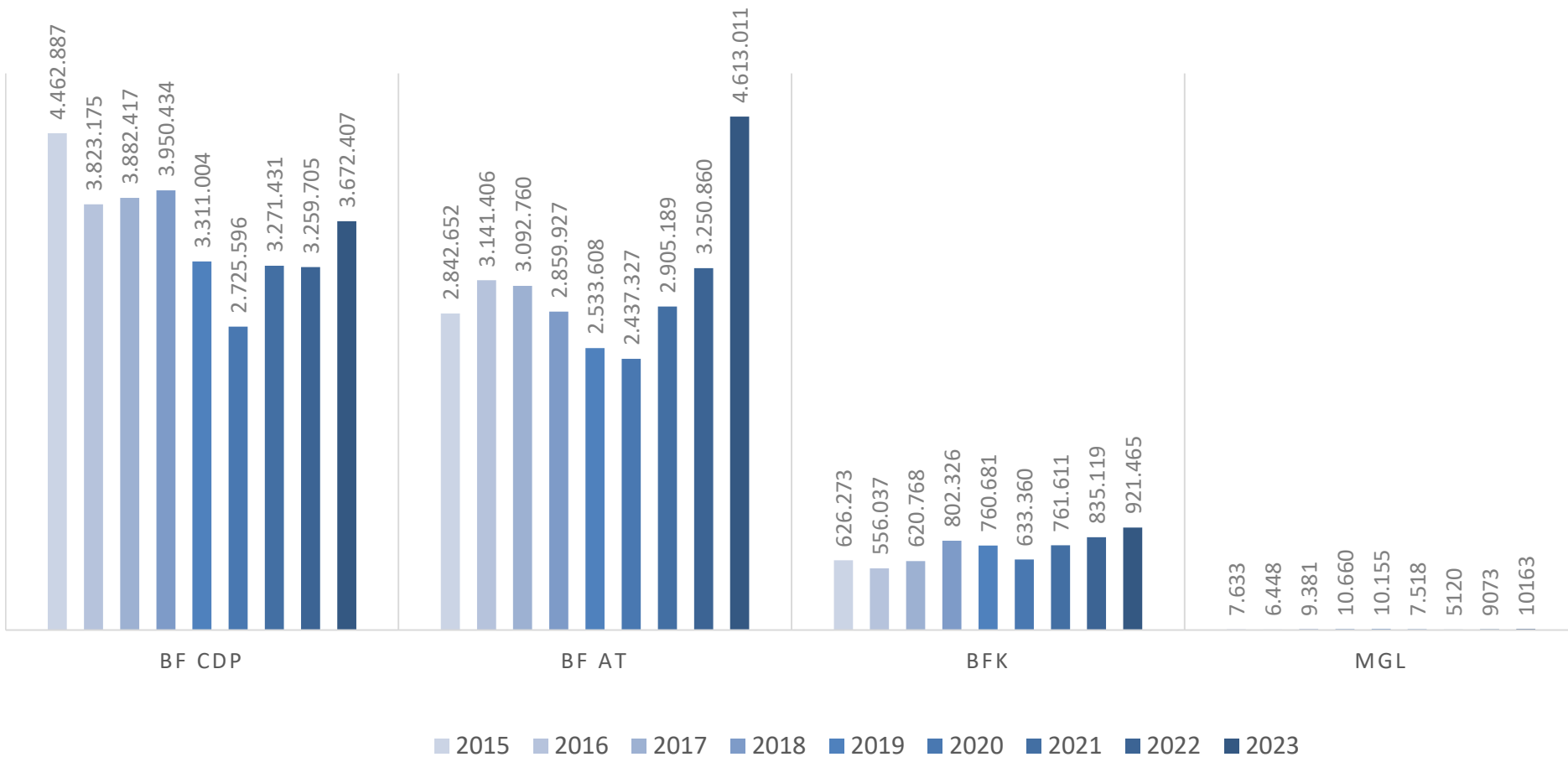


- Advanced Innovation & Research center
- Heat treatment lab
- Metallography Lab
- Optical Microscopy
- Scanning Electron Microscopy
- Mechanical testing lab
- Virtual manufacturing
- Advanced Learning-Technical Library
- Advanced learning courses
- 3D Printing (Plastic and Metals)



More than 35 post-graduate (Masters and Ph.D) researchers
R&D projects related to product development and process improvement

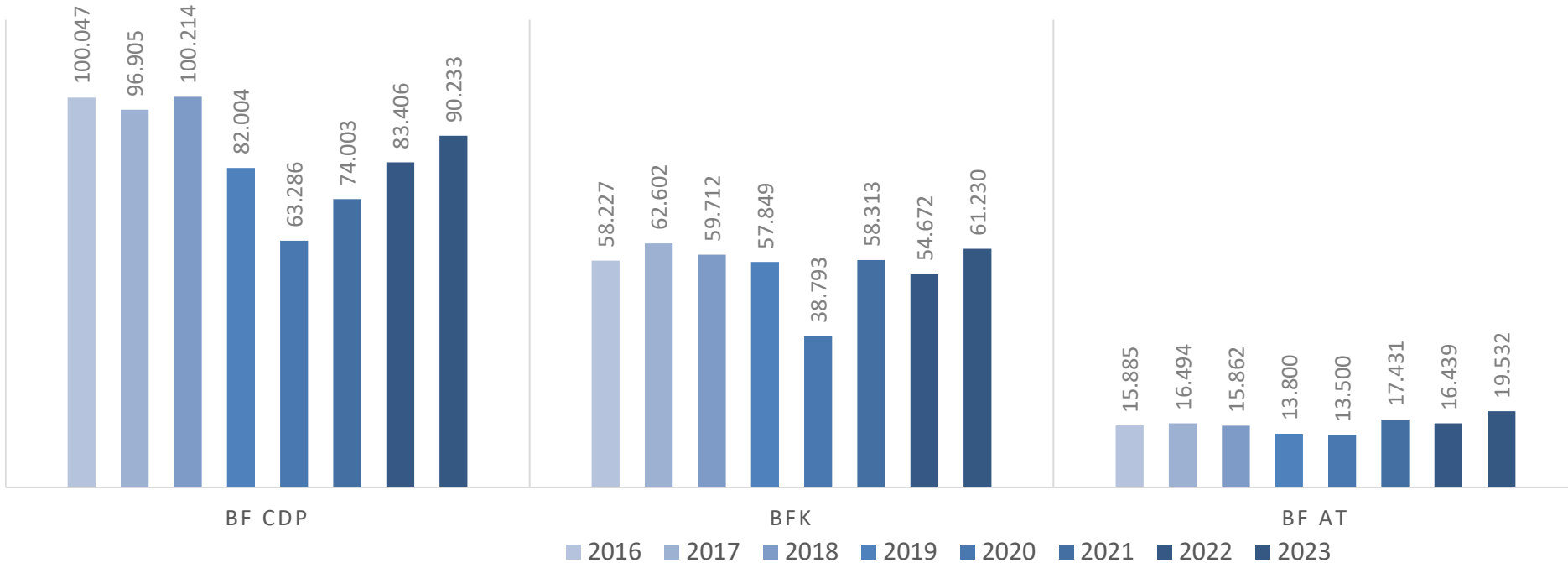
VERKAUFTE PRODUKTE (STÜCK) / SOLD PRODUCTS (PIECES)



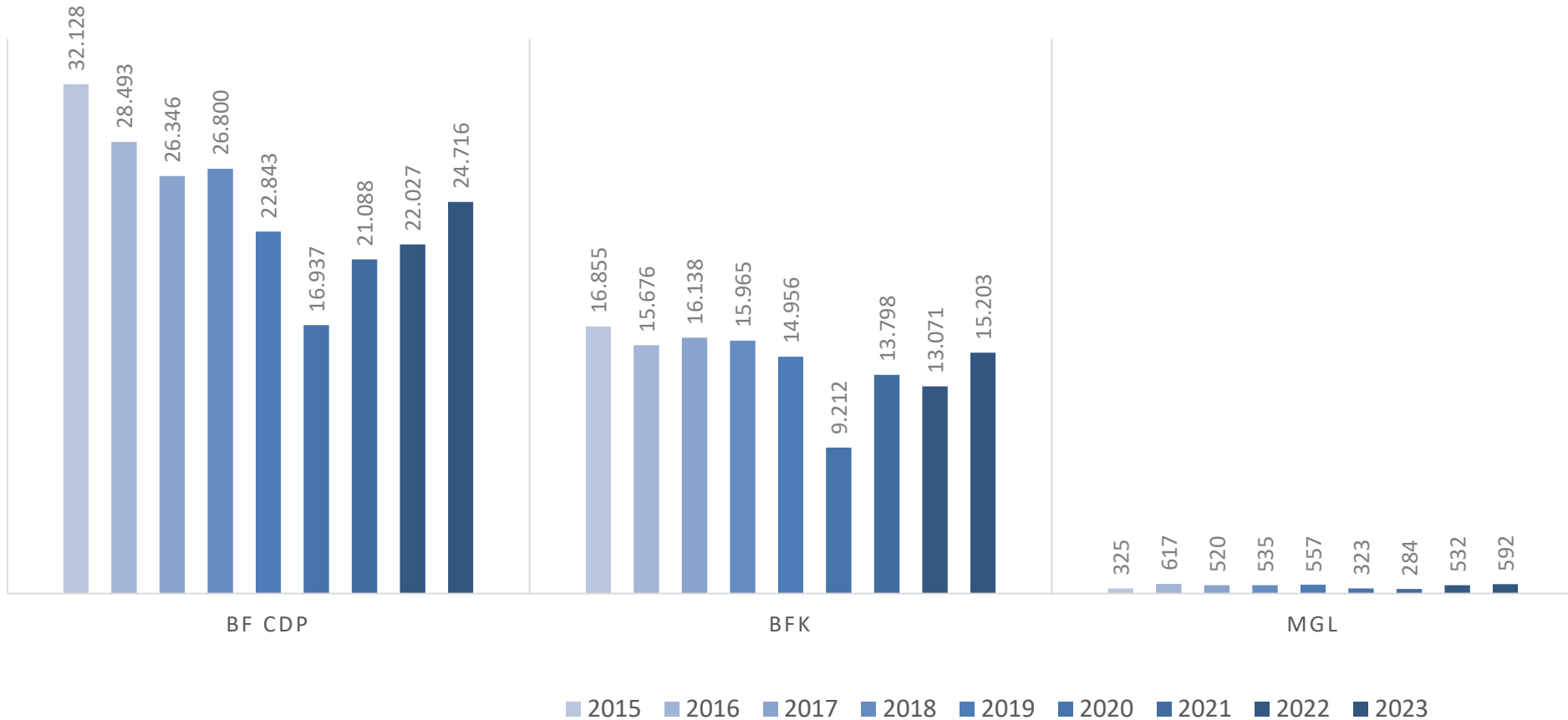
MATERIALEINSATZ (TONNEN) / MATERIAL CONSUMPTION (TONS)

Stahl / Steel

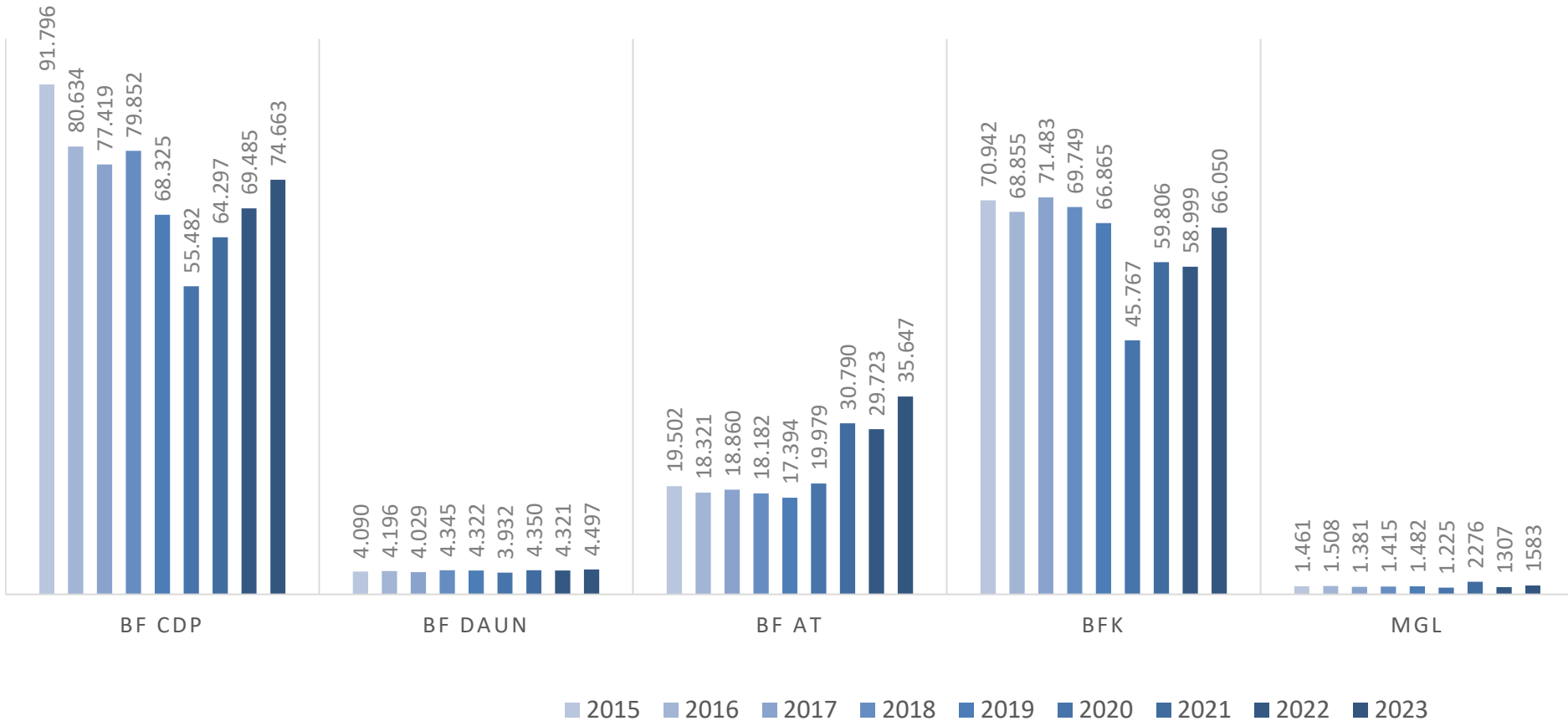
Aluminium / Aluminum



STAHLSCROTT (TONNEN) / STEEL SCRAP (TONS)



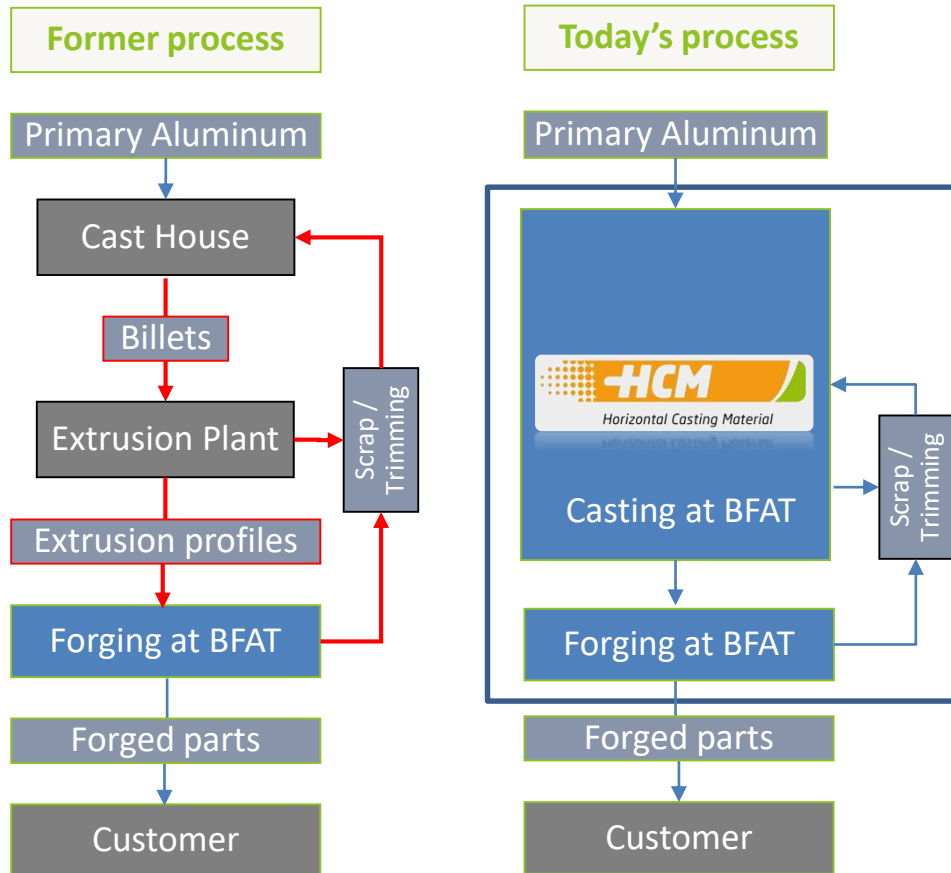
ENERGIEEINSATZ (MWH) / ENERGY CONSUMPTION (MWH)



Ökonomische Dimension

Economic dimension

HCM Process



Elimination of extrusion process including

- billet casting
- heat treatment
- Surface machining

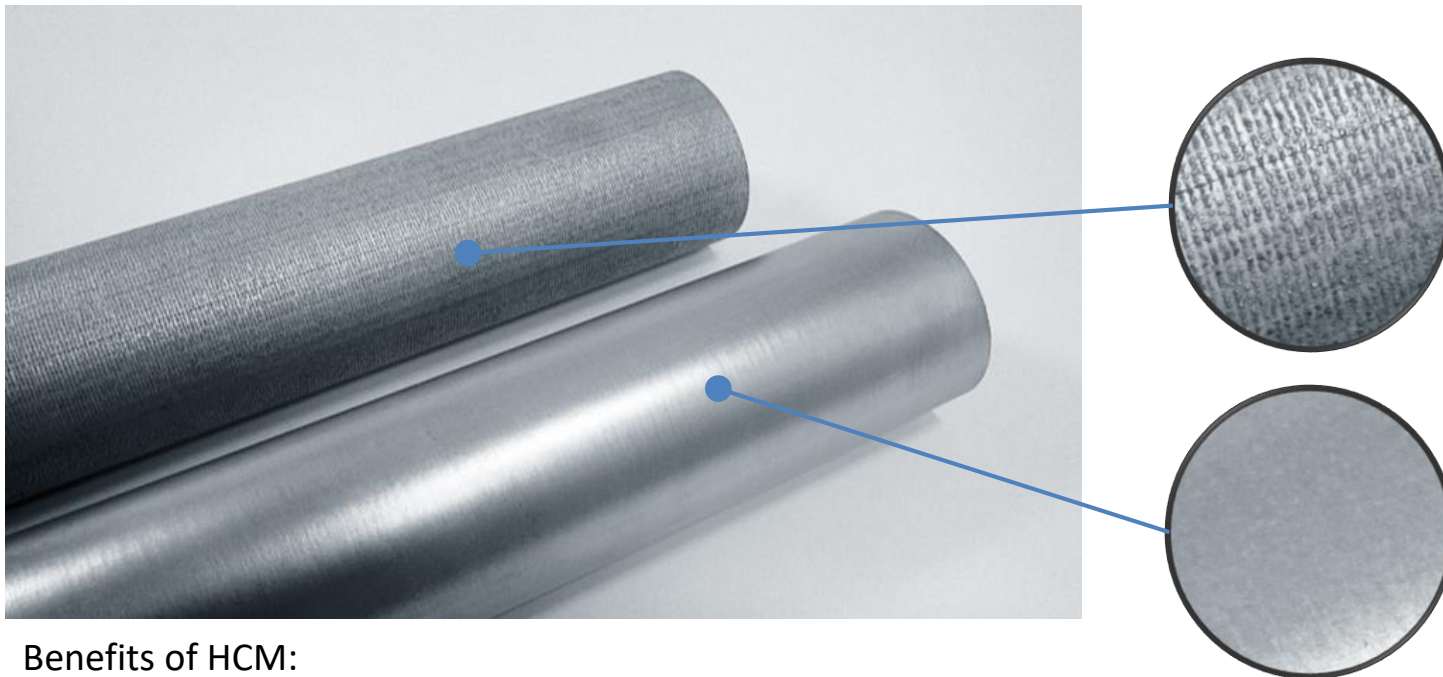
= 40% CO₂ savings

Elimination of excessive transport including
transport of scrap and trimming

= 3 ... 5% CO₂ savings

In total savings of up to 45% CO₂ !

HCM Technology - creates advantages, avoids subsequent processes



Benefits of HCM:

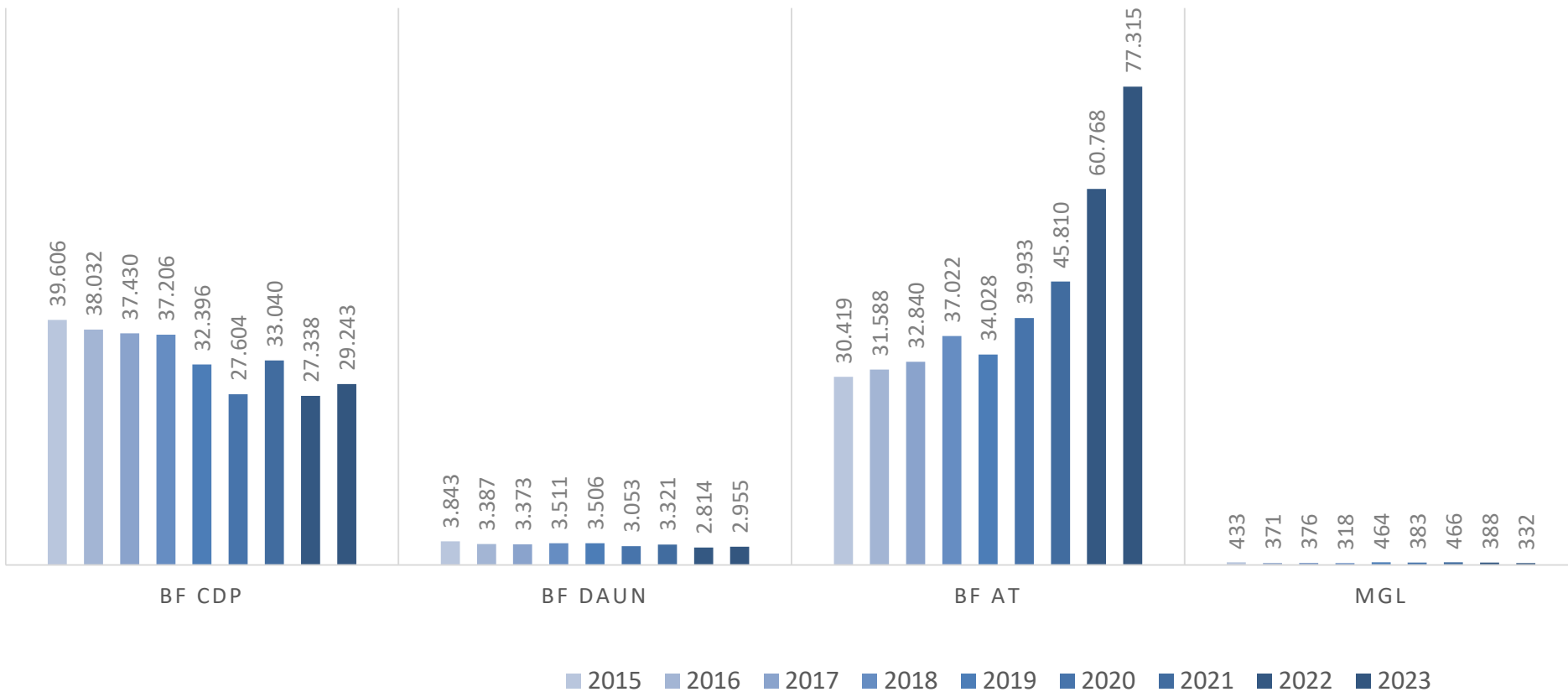
- High class cast surface => no peeling necessary
- Homogenous grain structure => no heat treatment necessary



Ökonomische Dimension

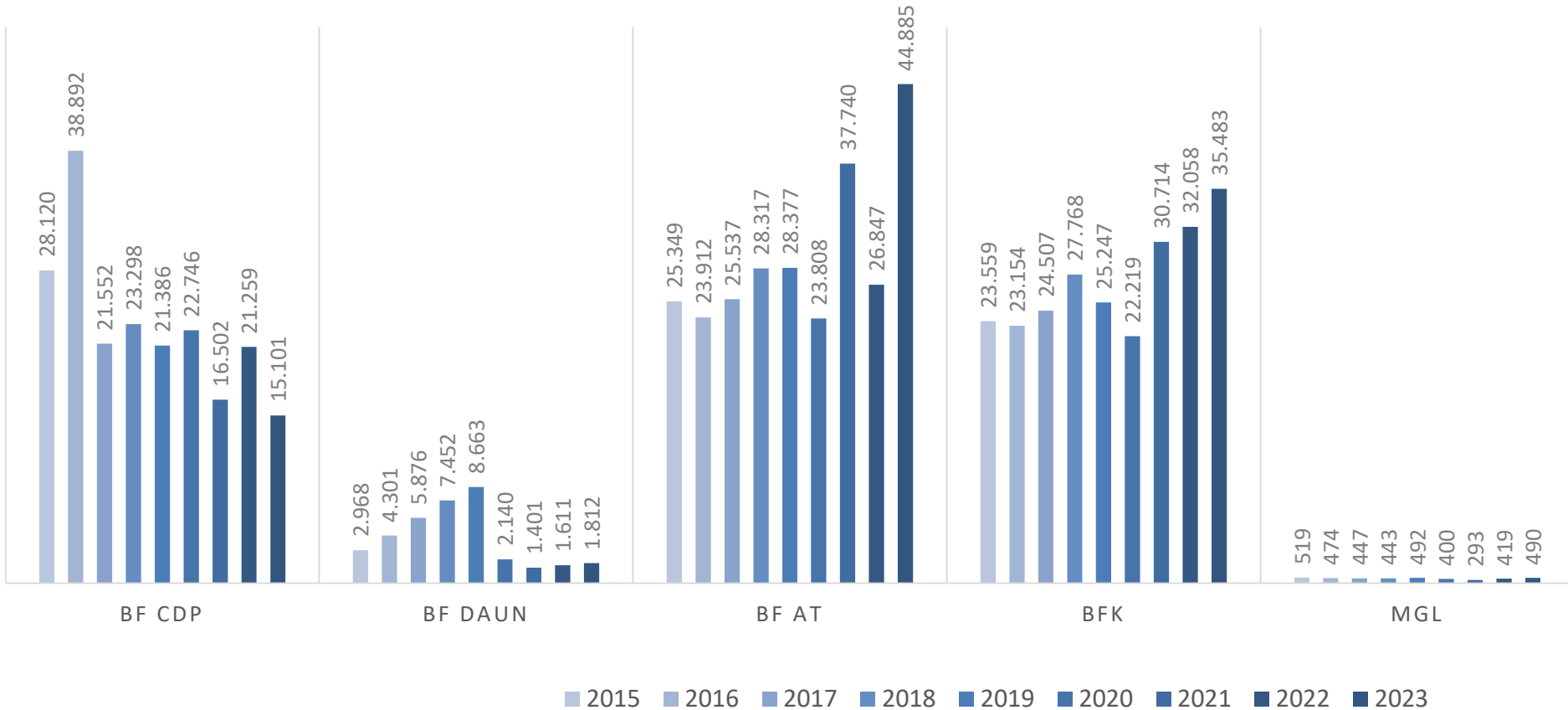
Economic dimension

Erdgas (MWh) / Natural Gas (MWh)



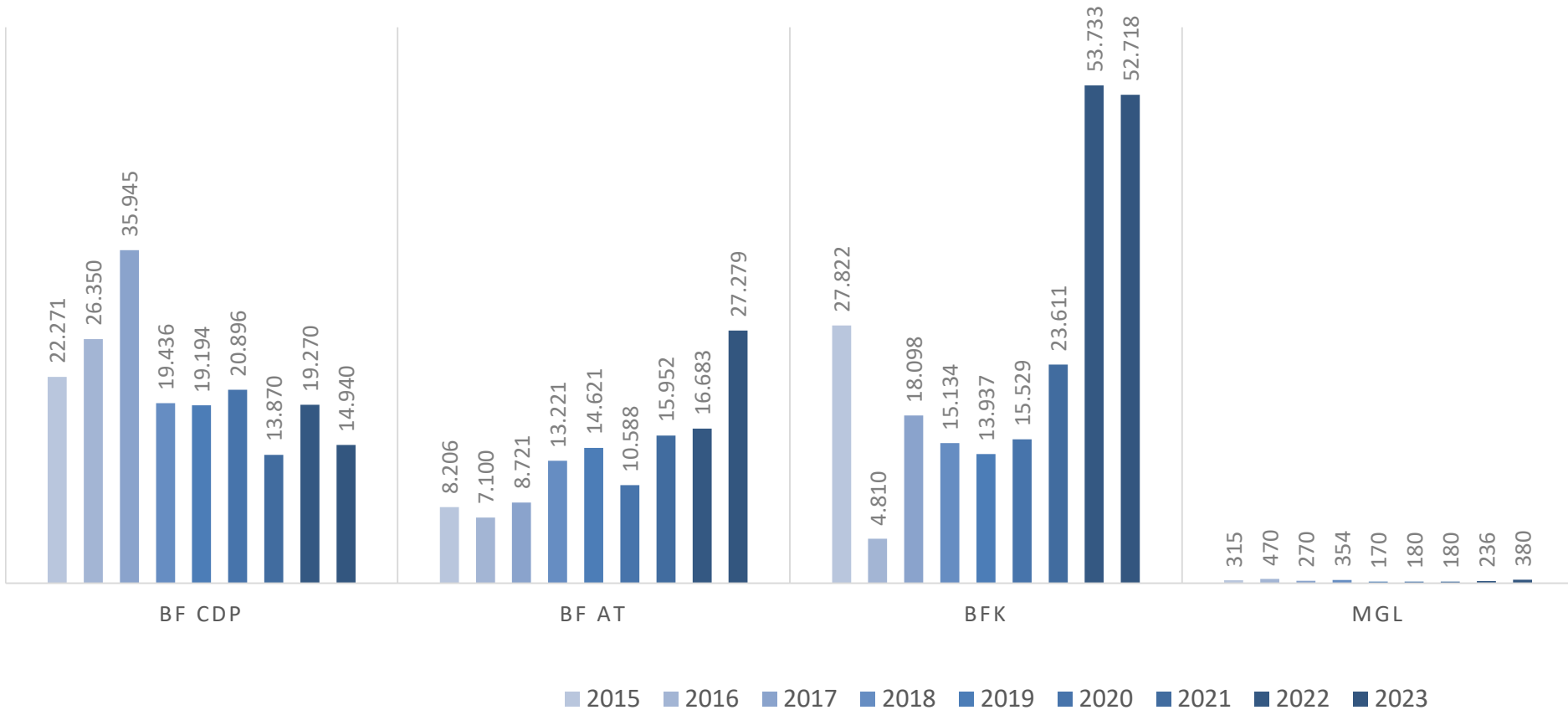
Ökonomische Dimension Economic dimension

Wasser (m³) / Water (m³)



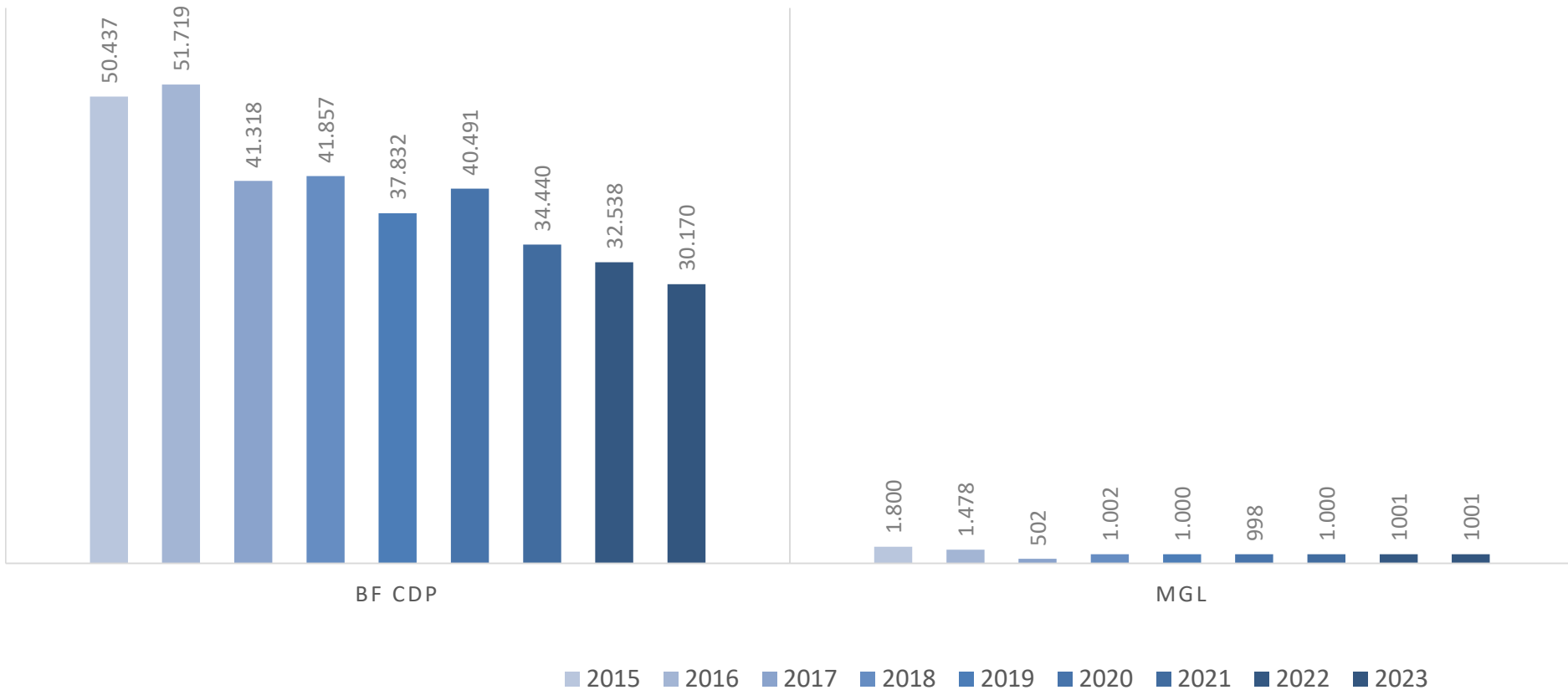
Ökonomische Dimension Economic dimension

Abwasser (I) / Waste water (I)



Ökonomische Dimension Economic dimension Kraftstoffe (I) / Fuels (I)

BHARAT FORGE
GLOBAL HOLDING



Bei Bharat Forge wird Wert auf die Qualifizierung der Mitarbeiter gelegt. Weiterbildung hält Mitarbeiter im Bereich neuer Technologien und optimaler Geschäftsabläufe auf dem Laufenden und treibt den Unternehmensfortschritt. Auf diese Weise ist Weiterbildung ein bedeutender Antrieb für Effizienz und Leistung von unseren Angestellten.

Effizientere Mitarbeiter sind effektiver. Fähigkeiten und Fachwissen werden unter Kollegen ausgetauscht und verbreiten sich so im ganzen Unternehmen. Wissenstransfer spielt innerhalb des Unternehmens eine große Rolle.

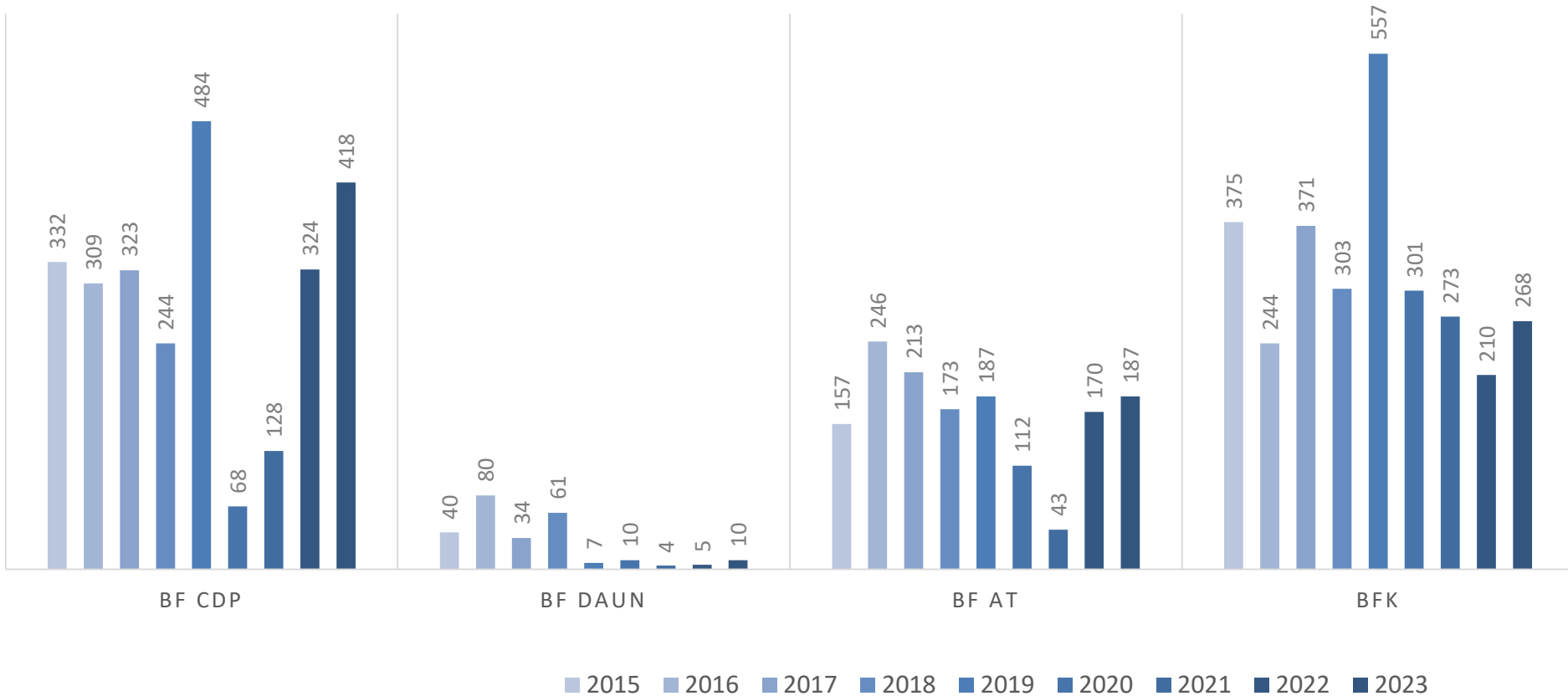
Sicherheits- und Gesundheitstraining reduzieren arbeitsbedingte Verletzungen und Krankheiten.

At Bharat Forge, we place great importance on qualifying employees. Further education keeps employees up to date with new technologies and optimal business processes and encourages improvements. In this way, training is a major driver of efficiency and performance for our employees.

More efficient employees are more effective. Skills and expertise are shared among colleagues and spread throughout the company. Knowledge transfer plays a major role within the company.

Safety and health training reduces work-related injuries and illnesses.

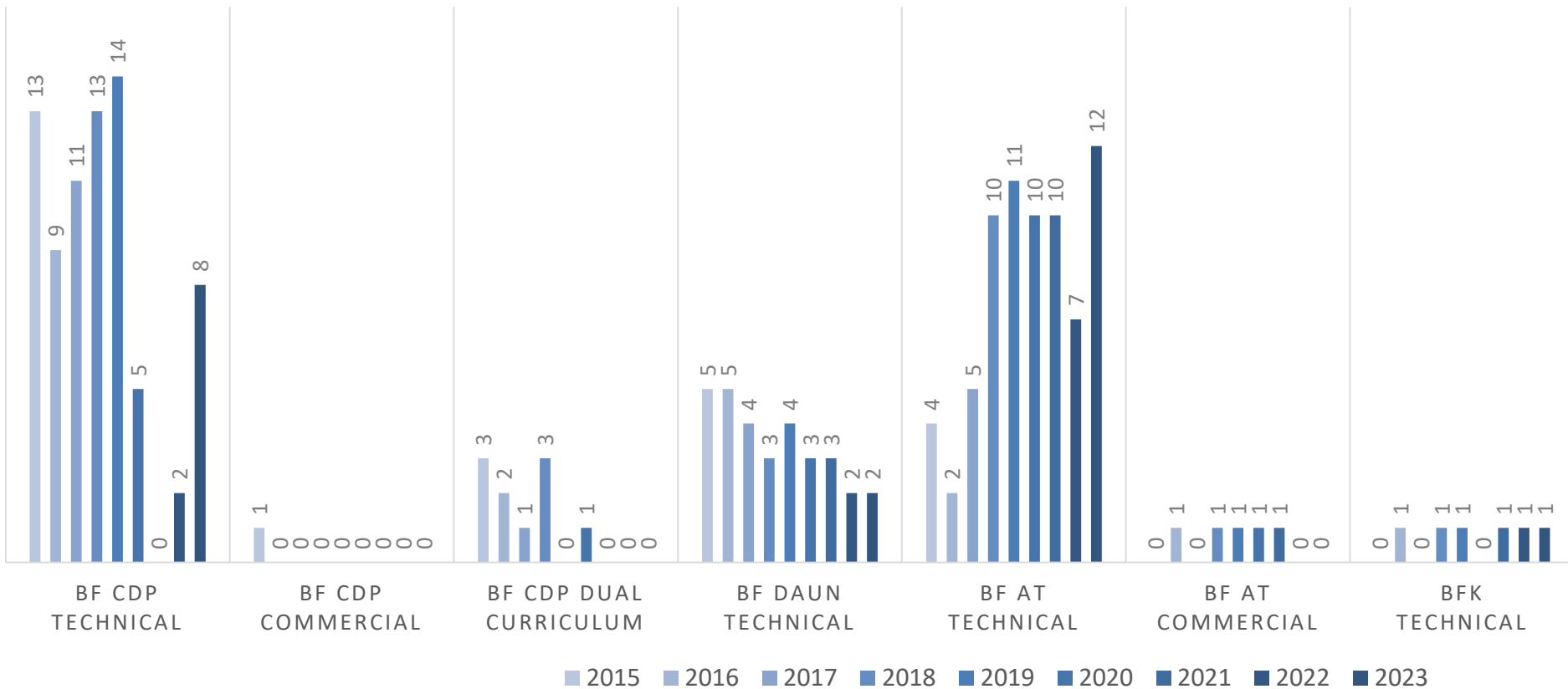
INTERNAL & EXTERNAL



Gesellschaftliche Dimension

Social dimension

Ausbildungsplätze / Apprenticeship



Die Einführung und Aufrechterhaltung von Zertifizierungen hilft die Wirksamkeit und Nachhaltigkeit der Prozesse und der Managementsysteme zielgerichtet und systematisch zu bewerten und stetig zu verbessern.

The introduction and maintenance of certifications helps to evaluate and constantly improve the effectiveness and sustainability of processes and management systems in a targeted and systematic manner.

Qualitätsmanagementsystem:

Zertifizierung IATF 16949:2016

Zertifizierung des Werkzeugbaus Daun (BFD) nach DIN EN ISO 9001:2015

Energiemanagementsystem:

Zertifizierung ISO 50001:2018

Arbeits-, Gesundheits- und Umweltschutzmanagementsystem:

Zertifizierung ISO 45001:2018 & 14001:2015

Ergänzende Anforderungen/Kundenspezifische Forderungen

Supplementary requirements/customer-specific requirements (CSR):

Automotive:

z. B. AUDI/VW – Formel-Q-Konkret; Daimler – MBST; BMW; Volvo; MAN; DAF; MAHLE; ZF u. a.

Non-Automotive:

z. B. Deutsche Bahn – (HPQ) Q1.

Die Bharat Forge Global Holding als Holding, hat selbst keine Zertifikate und kann auch nicht nach IATF zertifiziert werden.

Bharat Forge Global Holding as a Holding Company has no certificates and cannot be certified according to IATF.

		2016	2017	2018	2019	2020	2021	2022	2023
VV / sugg. Improvem.	abgegebene / rendered	137	104	49	29	12	19	23	21
	abgeschl. / completed	133	96	47	23	14	28	46	12
Workshops	Prozessverb.	0	4	2	3	0	0	0	0
		0	2	0	0	0	0	0	0
	SMED (Rüst- / set-up workshop)	0	1	1	0	0	0	0	0
	GAI (Ganzheitliche Anlagen Instandhaltung)	0	0	0	0	0	0	0	0
5-S-Audits	% Anzahl durchgef. Audits / amount comp. Audits	78	89	88	73	23	13	73	87
	Ø Punkte / points (v. 100)	79	82	87	84	81	83	82	82
6-δ	laufende / ongoing	0	3	2	2	0	0	0	0
	abgeschl. / completed	0	1	0	0	0	0	0	0

Bharat Forge Corporate Social Responsibility (CSR)

CSR is an integration of social and environmental objectives into business objective. Sustainability is the soul of CSR. The journey of CSR started in Bharat Forge in 1970 when Community Centers were established in different communities for empowerment of women. CSR has been evolved over decades at BFL with the simple objective of 'Giving Back to the society'.

"The society has contributed so much to our growth over the last 50 years. We, in return, should take actions for its betterment."

Babasaheb Kalyani
CMD, Bharat Forge Limited

We have started our CSR initiatives in specific areas which include - Village development, Promotion of Education, Skills Development, vocational training, environmental and ecological protection, health and hygiene, character building through sports.

Bharat Forge Corporate Social Responsibility (CSR)

45 years ago, Bharat Forge initiated a movement towards the upliftment of community, women and children. It was a movement led not with marches, but simple heart-to heart conversations.

Through all these years, we kept widening our focus and reached out to more and more people. We stood beside them, guiding them through change. And after four decades of determined, focused and result-oriented efforts, we touched the lives of millions.

Even though the CSR Act came into being in 2013, Bharat Forge has been shouldering the responsibility of social contributions from year 1978 when we set up two community centers for the socio-economic development of women. Furthermore, we ensure active compliance to all CSR legislations and requirements under all circumstances.

As a corporate, this belief to serve the community continues to grow stronger with every goal we achieve.

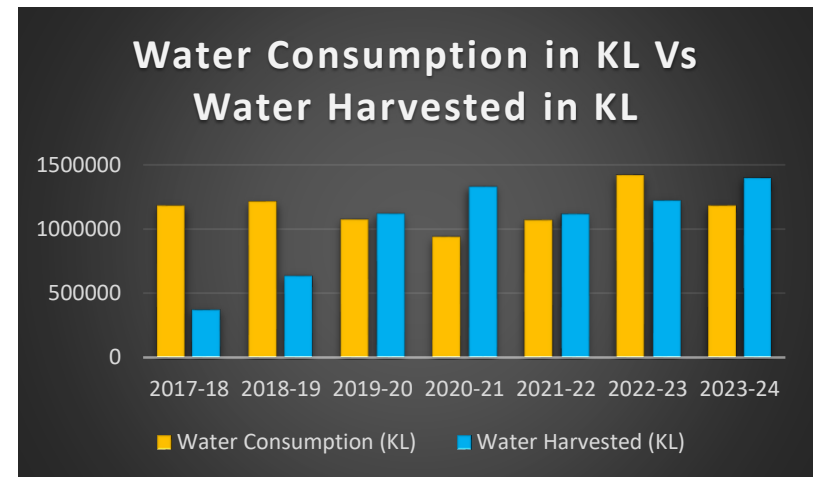
- VILLAGE DEVELOPMENT
- EDUCATION
- SKILL DEVELOPMENT
- WOMEN ENPOWERMENT
- COMMUNITY DEVELOPMENT

REACH OF OUR CSR PROJECTS FY 2023-24	
Total Lives Touched	231 544
Rural Lives Touched	216 215
Students Impacted	36 978
Youth Skilled	3 790
Women Empowered	1 300
Volunteers	3 251
Sportsmen Supported	5

Sustainability- connecting CSR projects with ESG- Trees Planted and Water Harvested



- Approximately 21 kg CO₂ is absorbed by 1 full grown tree in a year
- Trees Planted under CSR activity are getting accounted in GHG emission calculation of BFL, trees will offset the carbon emission done by BFL.



- Water Harvested under CSR activities is getting accounted in BFL water risk assessment, water harvested will help BFL to become water neutral and then water positive

Assumptions- Water harvesting:

- Year on year water storage efficiency will reduce linearly
- It is assumed that year on year water efficiency will decrease to 80%.

Gesellschaftliche Dimension / Social dimension

BFL India, Corporate Social Responsibility

Desilting of bandhara - Village Wagholi

BHARAT FORGE
GLOBAL HOLDING



- After desilting of water reservoir in the Visapur village, ample amount of water is now available for drinking and agricultural purpose. Total water storage capacity is 75 TCM.
- This has benefitted to 6900 villagers.



Desilting of Vruddha river at Wagholi village

Gesellschaftliche Dimension / Social dimension

BFL India, Corporate Social Responsibility

Desilting of bandhara - Village Amondi

BHARAT FORGE
GLOBAL HOLDING



- After desilting of water reservoir in the Amondi village , ample amount of water is now available for drinking and agricultural purpose. Total water storage capacity is 20 TCM.
- This has benefitted to 3500 villagers.



Desilting of Bandhara at Amondi village

Gesellschaftliche Dimension / Social dimension

BFL India, Corporate Social Responsibility

Desilting of bandhara - Village Nagewadi

BHARAT FORGE
GLOBAL HOLDING



- Total water storage capacity created is 35 TCM.
- This has benefitted to 2200 villagers.



Desilting of Bandhara at Nagewadi village

Gesellschaftliche Dimension / Social dimension

BFL India, Corporate Social Responsibility

Desilting of bandhara - Village Visapur

BHARAT FORGE
GLOBAL HOLDING



- Total water storage capacity created is 54 TCM.
- This has benefitted to 4600 villagers.



Desilting of Bandhara at Visapur village

Gesellschaftliche Dimension / Social dimension

BFL India, Corporate Social Responsibility

Desilting of bandhara - Village Belewadi

BHARAT FORGE
GLOBAL HOLDING



- Total water storage capacity created is 30 TCM.
- This has benefitted to 3100 villagers.



Desilting of Bandhara at Belewadi village

Gesellschaftliche Dimension / Social dimension BFL India, Corporate Social Responsibility Environmental awareness and Waste Management

BHARAT FORGE
GLOBAL HOLDING



Waste Management and Environmental awareness for school children

- We have installed 1090 composter planters in urban communities .
- This initiative has reduced 483.3 Tons of kitchen waste.

निसर्गरंग
BHARAT FORGE KALYANI
पंचम संस्करण
दिनांक: १ नवंबर २०१४ | पृष्ठ १ | www.nisargrang.com

वैशिष्ट्यपूर्ण अन् मनमोहक धनेश

टीम निरर्गरंग
info@nisargrang.com

धनेश वा मही केरल विभागका केरल राज्य, भारत में एक प्रमुख पक्षी है। यह पक्षी अपने सुंदर रंगों और लंबे तलवारों के कारण बहुत लोकप्रिय है। यह पक्षी अपने सुंदर रंगों और लंबे तलवारों के कारण बहुत लोकप्रिय है। यह पक्षी अपने सुंदर रंगों और लंबे तलवारों के कारण बहुत लोकप्रिय है।

निसर्गरंग
BHARAT FORGE KALYANI
पंचम संस्करण
दिनांक: १ नवंबर २०१४ | पृष्ठ १ | www.nisargrang.com

सत्र शुद्धपौष्टिभिन्नी... पाणवठ्यावरच्या प्राणिवाणवेची...

टीम निरर्गरंग
info@nisargrang.com

सत्र शुद्धपौष्टिभिन्नी... पाणवठ्यावरच्या प्राणिवाणवेची... This article discusses the benefits of composting and its impact on the environment. It highlights how composting can reduce kitchen waste and improve soil health. The article is written in Marathi and is part of the NisargRang newspaper.

निसर्गरंग
BHARAT FORGE KALYANI
पंचम संस्करण
दिनांक: १ नवंबर २०१४ | पृष्ठ १ | www.nisargrang.com

खयले माजरांच्या तरकरात वाढ

निसर्गरातील पेस्ट कंट्रोलर

टीम निरर्गरंग
info@nisargrang.com

खयले माजरांच्या तरकरात वाढ... This article discusses the increase in pangolin poaching and the impact on their population. It highlights the need for conservation efforts and the role of the government in protecting these animals. The article is written in Marathi and is part of the NisargRang newspaper.

NisargRang - Fortnightly Newspaper



JOURNEY TOWARDS
GREEN VILLAGES

Gesellschaftliche Dimension / Social dimension

BFL India, Corporate Social Responsibility

Green Villages - Introduction

BHARAT FORGE
GLOBAL HOLDING



Green Village is the concept where we focus on **Sustainable Development** of the village. To achieve that goal one has to work on all aspects of development which includes working with People, strive for Economic Prosperity, working for Peace, Partnering with different stakeholders, and Protecting the Planet.



Green Village is one which offers access to

- Clean Energy
- Adequate Water
- Proper Waste Management Mechanism
(No plastic)
- Hygienic Sanitation
- Basic Education
- Good Healthcare
- Good Infrastructure

Green Village also ensures

- Low carbon footprint
- High green cover
- Livestock management
- Self reliant society
- Community level social regulation

Gesellschaftliche Dimension / Social dimension

BFL India, Corporate Social Responsibility

Green Villages - Certification by IGBC

- In the initial phase we identified 6 villages for the assessment under Green villages as per the criteria of IGBC (Indian Green Building Council). It is the assessment body in India and part of CII.
- The identified 6 villages are from Koregaon tehsil of Satara district.
- The villages have been assessed on the following parameters.
 - ✓ Health & Hygiene
 - ✓ Village Infrastructure
 - ✓ Water Conservation
 - ✓ Energy Availability & Efficiency
 - ✓ Materials & Resources
 - ✓ Social Community Actions
 - ✓ Green Innovation
- This year we are planning to assess 10 new villages.

Sr. No.	Name of the village	Points Secured	Rating
1	Dhamner	81	Platinum
2	Saygaon	74	Gold
3	Nagzari	64	Gold
4	Takale	67	Gold
5	Targaon	55	Silver
6	Rui	69	Gold

Rating Indicator

Points	Certification Level	Recognition
40-49	Certified	Good Practices
50-59	Silver	Best Practices
60-79	Gold	National Excellence
80-100	Platinum	Global Leadership

Gesellschaftliche Dimension / Social dimension

BFL India, Corporate Social Responsibility

Digital CNC Simulation Lab – ITI Khed

**BHARAT FORGE
GLOBAL HOLDING**



- Being the industry partner to ITI Khed the CNC lab is set up with the joint efforts of Bharat Forge and ITI(Khed). Technical assistance is provided by Simusoft Technologies.
- This set up will help the students of ITI to learn the CNC operations. It is also useful to the nearby industries to excel their employees in CNC programming and overall industrial cluster of Khed will get benefited by this initiative.
- The inauguration of the lab was done in the presence of Mr. Digambar Dalvi (Director of Vocational Education and Training) Mr. Dilip Mohite Patil (MLA of khed constituency), Mr. Bhavsar (Joint Director, Regional Office – Pune), Mr. Sunil chore, Director Simusoft Technologies, CSR team of Bharat Forge, along with the principal and students of ITI - Khed. We will be setting such labs in other educational institutes & ITIS.



Digital CNC Simulation Lab - ITI Khed

Gesellschaftliche Dimension / Social dimension

BFL India - Corporate Social Responsibility

Infrastructure of Z P Schools in Villages

**BHARAT FORGE
GLOBAL HOLDING**



Z P School, Kole



Z P School, Gurholi - Toilet work



Z P School, Gurholi - 2 classrooms

Gesellschaftliche Dimension / Social dimension

BFL India, Corporate Social Responsibility

Infrastructure Development & Construction of School buildings

BHARAT FORGE
GLOBAL HOLDING



New english school, Salave [Patan]



Z P School, Gurholi - 2 classrooms



Gesellschaftliche Dimension / Social dimension

BFL India, Corporate Social Responsibility

Telemedicine Project

**BHARAT FORGE
GLOBAL HOLDING**



Transferring Technology to Villages - 8 Telemedicine centers are running in the villages benefitted to more than 40000 villagers.



Third Party Assessment Agency Details

Sr. no	Agency	Name of Project	CIN No.	About Organization
1	Doorstep Health Services	Establishing Water filters in villages	U74900PN2012PTC144379	Doorstep Health Services (DHS) is a Private Limited Company which specializes in Telemedicine enabled Primary Health Care Services Incorporated in 2012.
2	IGBC	Green villages	-	The Indian Green Building Council (IGBC), part of the Confederation of Indian Industry (CII) was formed in the year 2001. The vision of the council is, "To enable a sustainable built environment for all and facilitate India to be one of the global leaders in the sustainable built environment by 2025"
3	Soulace	Telemedicine	U93090WB2009PTC135292	SoulAce is one of the research and advisory firm operating in the CSR & Development Sector in the South Asian region, working with Corporates, NGOs, Government and Foundations. It is established in 2009, it has been setting its footprint as a pioneer in the sector for over 12 years.



Life time achievement award 2023

Mahatma award recognize and celebrate social impact leaders and change makers across the globe. Dr Baba Kalyani, Chairman & Managing Director of Bharat Forge was honored with “Mahatma Award 2023 for Lifetime achievement in Sustainable Business Practices”. This award stands as evidence of his meaningful societal contributions towards sustainable progress.



Mahatma Award for CSR Excellence 2023

Bharat Forge received the prestigious “Mahatma Award for CSR Excellence” in recognition of its efforts and dedication to Corporate Social Responsibility (CSR), highlighting our unwavering commitment to making a meaningful impact in the development of society.

Gesellschaftliche Dimension / Social dimension

BFL India, Corporate Social Responsibility

Green Villages certification by IGBC

**BHARAT FORGE
GLOBAL HOLDING**



Gesellschaftliche Dimension / Social dimension

BFL India, Corporate Social Responsibility

NGO & Media Meet 2023-24

**BHARAT FORGE
GLOBAL HOLDING**



NGO Partners meeting with our CMD- Presentation of work & sharing of ideas



NGO meeting with Media - CSR Press Conference

Gesellschaftliche Dimension / Social dimension

BFL India, Corporate Social Responsibility

Departmental CSR Teams

**BHARAT FORGE
GLOBAL HOLDING**



Our Departmental CSR Teams are involved in our various CSR projects. To appreciate their efforts & to give valuable suggestions, we have called outside assessors Dr. B. T. Lawani & Mr. Omkar Banait to view the presentations by employees under departmental CSR. 11 departments were felicitated



Die Bharat Forge Gruppe und Bharat Forge Global Holding für die zugeordneten Unternehmen haben Regelungen zur Korruptionsprävention und Compliance.

Compliance wird in diesem Sinne als regelkonformes Verhalten von Unternehmen und Mitarbeitern verstanden. Der Begriff Compliance wird verwendet, um die Einhaltung juristischer Vorschriften, aber auch freiwillige Kodizes im Unternehmen zu umschreiben.

Als Ziel der Compliance ist die Steigerung der Effektivität durch klare Regeln sowie die Risikominimierung anzuführen.

Die Erweiterung des Compliance Verständnisses auf die Felder des ganzheitlichen Risikomanagements und des Qualitätsmanagements schafft ein integriertes Präventionssystem, das durch unternehmerische Steuerungsmodule präventiv auf die Non-Konformität von Vorgaben wirkt und ein ordnungsgemäßes Verhalten sicherstellt.

The Bharat Forge Group and Bharat Forge Global Holding for the associated companies have regulations on corruption prevention and compliance.

Compliance is in this sense understood as compliant behavior of companies and employees. The term compliance is used to indicate to comply with legal regulations as well as voluntary codes in the company.

The goal of compliance is the increase of the effectiveness by clear rules as well as to minimize risks.

The extension of compliance understanding to the fields of holistic risk management and quality management creates an integrated preventive system which -through entrepreneurial control modules- affects preventative the non-compliance of prescriptions and ensures proper behavior.

Mitgeltende Dokumente sind:

- Verhaltenskodex für Mitarbeiter;
- Arbeitsdokumente zur kartellrechtskonformen Arbeit;
- Anforderungen an Einladungen;
- Guideline zur kartellrechtskonformen Durchführung von Sitzungen;
- Verhaltensregeln für den Durchsuchungsfall;
- Supplier Code of Conduct;
- Whistleblower Richtlinie Bharat Forge.

Die Geschäftsführung ist sich der Bedeutung dieser Thematik bewusst und hat Compliance Officer für jede Gesellschaft berufen.

Sie achten auf die Konformität der Regeln und unterstützen die Mitarbeiter bei der Umsetzung und der Einhaltung selbiger.

Regelmäßige Schulungen stellen sicher, dass die Mitarbeiter informiert, qualifiziert und sensibilisiert sind.

Other applicable documents are:

- Code of Conduct for Employees;
- Working documents on antitrust compliant work;
- Invitation requirements;
- Guideline on antitrust-compliant conduct of meetings;
- Behavior in cases of search;
- Supplier Code of Conduct;
- Whistleblower policy Bharat Forge.

The management is aware of the importance of this topic and has appointed Compliance Officers for each company.

They pay attention to the conformity of the rules and support the coworkers with the implementation and compliance thereof.

Regular training ensures that employees are informed, qualified and sensitized.



innovation at the heart

BHARAT FORGE



Thank you!